



ELITE DESIGNER SERIES

# AVALON

STAINLESS STEEL RAILING SYSTEM

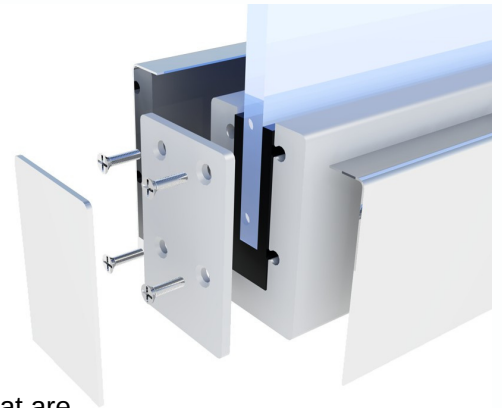
**AVALON Stainless Steel Railing Systems** are exclusively manufactured by **TUTTLE Railings** (A Division of Dant Clayton)

**AVALON** is a pre-engineered glass supported rail system. **AVALON** offers uninterrupted views of your interior finishes or exterior horizons. Adding subtle elegance with top and assist rail options, gives every application a unique custom appearance.

**DESIGN STANDARDS:** A240 / A240M / A276 / A276M / A554 / A666 (Stainless), C1172 (Glass), F837-08 (SS Hardware). **AVALON** railing systems are designed to meet performance criteria as outlined in IBC 2009, 2012, 2015 and 2018.

**AVALON** is a pre-engineered modular system and should be assembled using the components listed:

- ALUMINUM MOUNTING SHOE: Utilizing Tuttle's Dry Lock glass wedge and gasket system.
- STAINLESS STEEL CLADDING: Enclosing Aluminum Shoe with Stainless Steel Finish.
- STAINLESS STEEL TOP RAIL: 1.5" round or square "U" railing with Tuttle "U" Gasket Fitting to secure Top Rail to Glass panels.
- STAINLESS STEEL ASSIST RAIL: 1.5" round or square tube railing
- ASSIST RAIL BRACKETS: All ASSIST rails to be connected by brackets approved by TUTTLE Railings (A Division of Dant Clayton)
- FINISHES: Standard satin and polished finishes are available for stainless steel railings. Anodized finishes are not available.
- GLASS: 1/2" tempered glass infill furnished by TUTTLE Railings (A Division of Dant Clayton) for field attaching to AVALON post



**AVALON** railing system must be attached with fasteners and to surfaces that are approved or selected by the manufacturer and must be detailed on all shop drawings.

**GUARANTEE:** TUTTLE Railings (A Division of Dant Clayton) warrants that its **AVALON** railing system is of sound quality, conforming to standards as stated in **DESIGN STANDARDS** and is reasonably free of defects in material and workmanship. TUTTLE Railings (A Division of Dant Clayton) has no control over the installation of its products, no other warranty is expressed or implied. TUTTLE Railings (A Division of Dant Clayton) does not warrant against glass breakage.



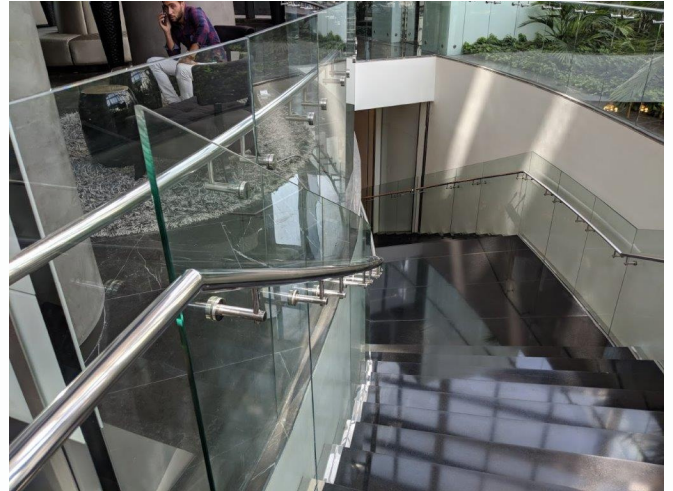
ELITE DESIGNER SERIES

# AVALON

STAINLESS STEEL RAILING SYSTEM

**MAINTENANCE:** The surface of TUTTLE Railings (A Division of Dant Clayton) material can be kept clean using ordinary soaps and mild cleansers. Abrasive cleaners should not be used.

**TECHNICAL SERVICES:** Technical services are rendered direct from TUTTLE Railings (A Division of Dant Clayton) in Fishers, Indiana.

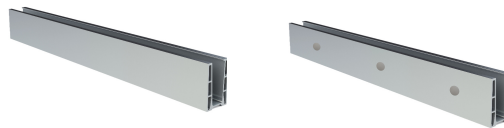


**ACCESSORIES:** Customize **AVALON** railings with these accessories. Contact TUTTLE Railings (A Dant Clayton Division) for additional custom design options.

**TOP & ASSIT RAIL  
OPTIONS:**



**BASE  
ATTACHEMENTS:**

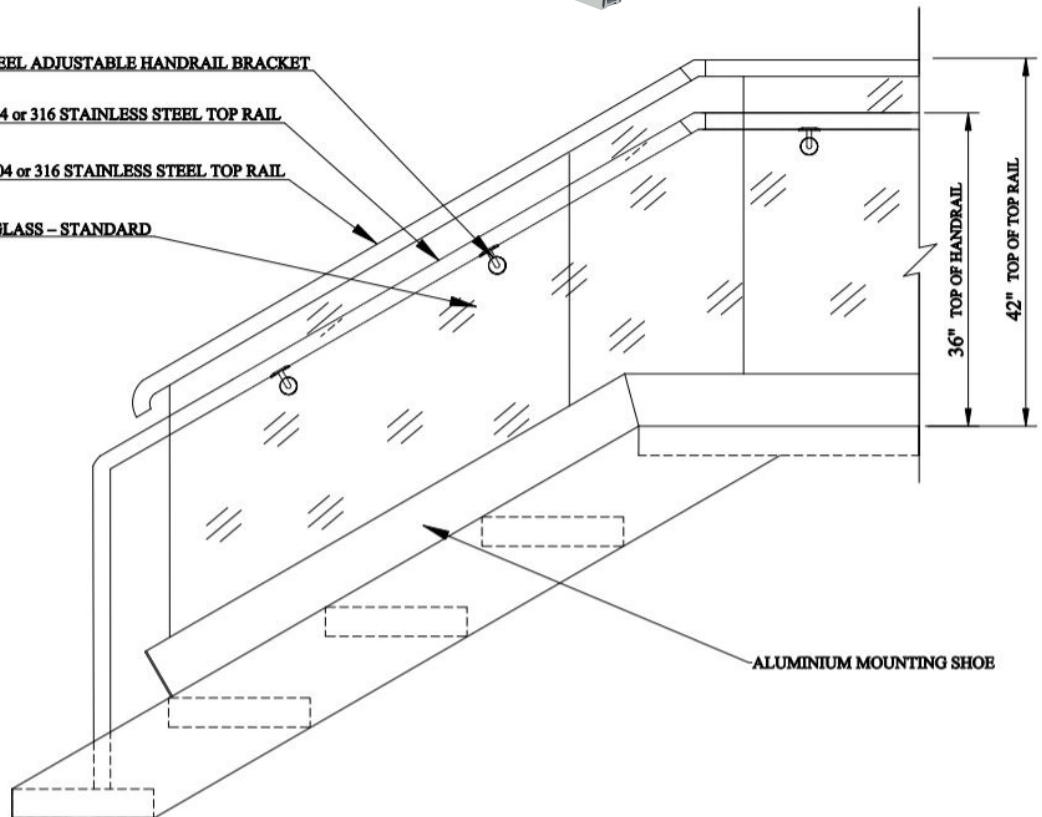


316 STAINLESS STEEL ADJUSTABLE HANDRAIL BRACKET

1-1/2"Ø (SCH.10) 304 or 316 STAINLESS STEEL TOP RAIL

1-1/2"Ø (SCH.10) 304 or 316 STAINLESS STEEL TOP RAIL

1/2" LAMINATED GLASS - STANDARD



ALUMINIUM MOUNTING SHOE

