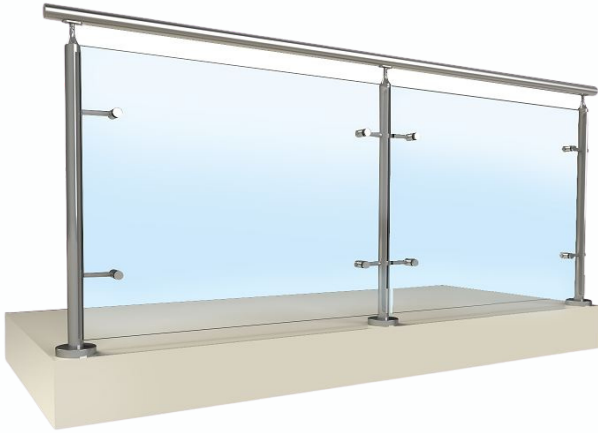


ELITE DESIGNER SERIES

SYDNEY

STAINLESS STEEL RAILING SYSTEM



SYDNEY Stainless Steel Railing Systems are exclusively manufactured by **TUTTLE Railings** (A Division of Dant Clayton)

SYDNEY railing system is a pre-engineered, round baluster component-based system, that offers elegant styling, perfectly matching a broad variety of architectural designs. Combine **SYDNEY's** classic aesthetics with an endless variety of rail and infill options to add the finishing touches to any building type.

DESIGN STANDARDS: A240 / A240M / A276 / A276M / A554 / A666 (Stainless), C1172 (Glass), F837-08 (SS Hardware). **SYDNEY** railing systems are designed to meet performance criteria as outlined in IBC 2009, 2012, 2015 and 2018.

SYDNEY is a pre-engineered modular system and should be assembled using the components listed:

- 42" high round guardrail post for tempered glass infill applications. Shall be type 304 or 316 stainless steel posts spaced at 4'-0" O.C. maximum
- 42" high guardrail post for tempered glass infill applications with side mounted handrails at 34" above stair nosing. Shall be type 304 or 316 stainless steel spaced at 4'-0" O.C. maximum
- TOP RAIL: 1.5" round or square tube railing
- ASSIST RAIL: 1.5" round or stainless steel tube railing
- TOP and ASSIST RAIL BRACKETS: All rails to be connected by brackets approved by TUTTLE Railings (A Division of Dant Clayton)
- FINISHES: Standard satin and polished finishes are available for stainless steel railings. Anodized finishes are not available.
- GLASS: 1/2" tempered glass infill furnishes by TUTTLE Railings (A Division of Dant Clayton) for field attaching to **SYDNEY** post

SYDNEY railing system must be attached with fasteners and to surfaces that are approved or selected by the manufacturer and must be detailed on all shop drawings.

GUARANTEE: TUTTLE Railings (A Division of Dant Clayton) warrants that its **SYDNEY** railing system is of sound quality, conforming to standards as stated in **DESIGN STANDARDS** and is reasonably free of defects in material and workmanship. TUTTLE Railings (A Division of Dant Clayton) has no control over the installation of its products, no other warranty is expressed or implied. TUTTLE Railings (A Division of Dant Clayton) does not warrant against glass breakage.



ELITE DESIGNER SERIES

SYDNEY

STAINLESS STEEL RAILING SYSTEM

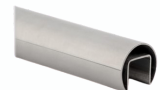
MAINTENANCE: The surface of TUTTLE Railings (A Division of Dant Clayton) material can be kept clean using ordinary soaps and mild cleansers. Abrasive cleaners should not be used.

TECHNICAL SERVICES: Technical services are rendered direct from TUTTLE Railings (A Division of Dant Clayton) in Fishers, Indiana.

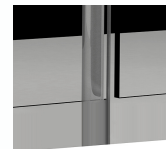


ACCESSORIES: Customize **SYDNEY** railings with these accessories. Contact TUTTLE Railings (A Dant Clayton Division) for additional custom design options.

TOP & ASSIST RAIL OPTIONS:



BASE ATTACHEMENTS:



316 STAINLESS STEEL GLASS SPIDER FITTINGS

316 STAINLESS STEEL ADJUSTABLE HANDRAIL BRACKET

1-1/2"Ø (SCH.10) 304 or 316 STAINLESS STEEL TOP RAIL

1-1/2"Ø (SCH.10) 304 or 316 STAINLESS STEEL TOP RAIL

1/2" LAMINATED GLASS - STANDARD

1-1/2"Ø (SCH.80) POST

MINIMUM ONE THREAD

STAINLESS STEEL BASE PLATE ATTACHED TO STAIR STRINGER

